

Before setting up your file please follow the Windows 98 Printer Setup tip sheet (next page) to properly configure your Windows 98 environment.

These tips explain setup for slide output. Page size for other output devices will be different.

1. For slide output it is crucial that you choose the Imagers Film Recorder as your output device.
2. This next step will depend on your software capabilities. If your software has a slide setting, then you should be able to choose it and leave your unprintable area set for zero in all fields. While the most common slide size setting is 11x7.34, some applications will have a different slide page size.

Make sure you note the page size and inform us of the exact setup to ensure proper output.

If your software does not have a slide choice, set to an 8.5x11 page with a landscape orientation. The unprintable area must be set to .58 top and bottom and 0 left and right. Your software should then either show a page size of 11x7.34 or show a margin area of 11x7.34 on an 8.5x11 page.

3. Depending upon your software, you will either be able to set a background fill or you will need to draw a box filled with the color you desire for your background covering the **entire** page.
(The paper color option allowed in some software is not for output purposes. A filled box must be drawn to have a color background.)
For a white background, make sure you draw a box filled with white (However, please note we do not recommend a white background because large areas of white will cause color to appear washed out.)
4. Your slide must be constructed within the 11x7.34 area. When placing text or graphics **leave at least a .25" margin on all sides** to ensure clipping does not occur when the slide is mounted.
5. The file must then be printed to a PostScript file. Choose Print and ensure all settings are correct. Name the file with a .cps as the extension to indicate it is a color PostScript file.

You must inform IMAGERS, in writing, of the exact setup of the files to ensure proper output.

Color Suggestions

When defining color for slides, utilize the RGB color model for all elements. This will allow a higher degree of fidelity between screen and output.

The color mode for color lasers should be CMYK. RGB is not a dependable color mode choice for color laser output because it is not the color mode the printers are designed to output. While our technicians will attempt to ensure the most acceptable color possible, RGB output is **not** consistent.

Other Items

- **Your PostScript files cannot be opened to verify setup or to adjust settings.** Improperly prepared files will incur the same output charges as properly prepared files. We highly recommend you plan enough production time to test your output.
- **Abnormalities you experience to your PostScript printer usually will be duplicated when the file is output.** Don't rely on your screen, test print to a PostScript printer whenever possible.
- Additional charges will be assessed for jobs totalling over 20 megs (output file, supports, and fonts) at a rate of \$2.50 per meg.
- Jobs sent on multiple disks will incur charges of \$5.00 per disk. Removables (CD, Zip, Jaz) are highly suggested for large files.
Do not compress files sent on removables or extra charges may apply.
- Pattern fills will not image to film. Fill objects with solid or gradient colors only.

For 35mm slide output, Imagers Film Recorder should be chosen as your output device. Printer files for the recorder and our other output devices are available for download from our web site at www.imagers.com in the Downloads area.

The QMS Colorscript 100 Model 10 (available on Win 95 CD) may be chosen as an alternative, but we recommend using the driver specifically designed for the chosen output device to ensure proper output.

Install the printer as you would any Win 98 printer by clicking "Add a Printer" in the Printers dialog and following the steps. (When prompted to choose a printer click have disk and choose the directory containing the Imagers printer files.) Once the printer is installed, follow these setup guidelines:

1. Select Settings and Printers from Start menu. Right-click Imagers Film Recorder, and get Properties.
2. Select the Paper tab and set to Letter. (Fig 1)
3. **Click Unprintable Area and set to zero left and right and .58 top and bottom.** (Fig 2)
4. Select the PostScript tab and ensure Print PostScript error information is not checked. (Fig 3)
5. Click Advanced and select PostScript Level 2, Compress Bitmaps and Pure Binary Data. (Fig 4)

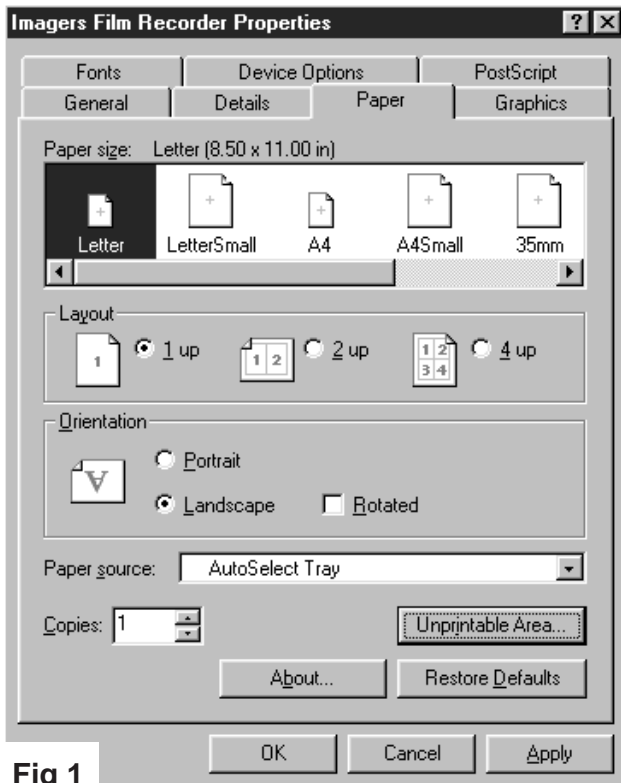


Fig 1

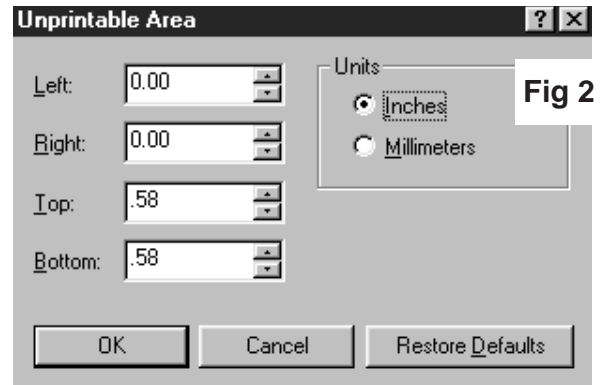


Fig 2

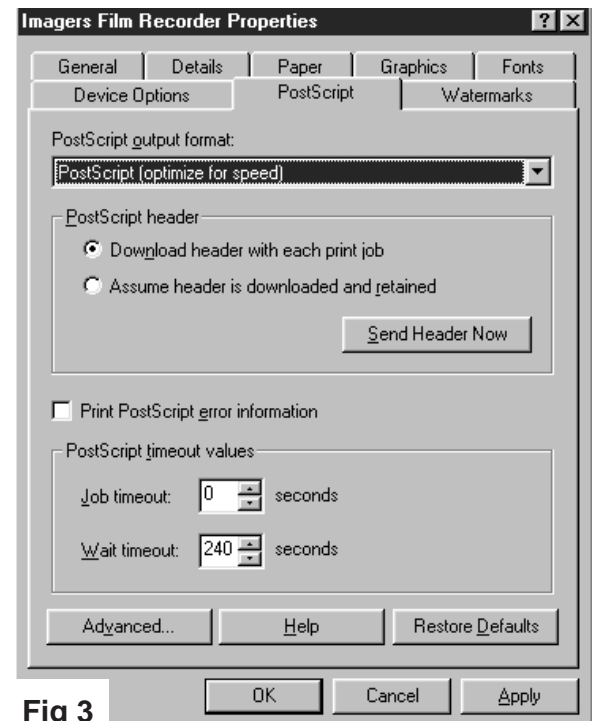


Fig 3

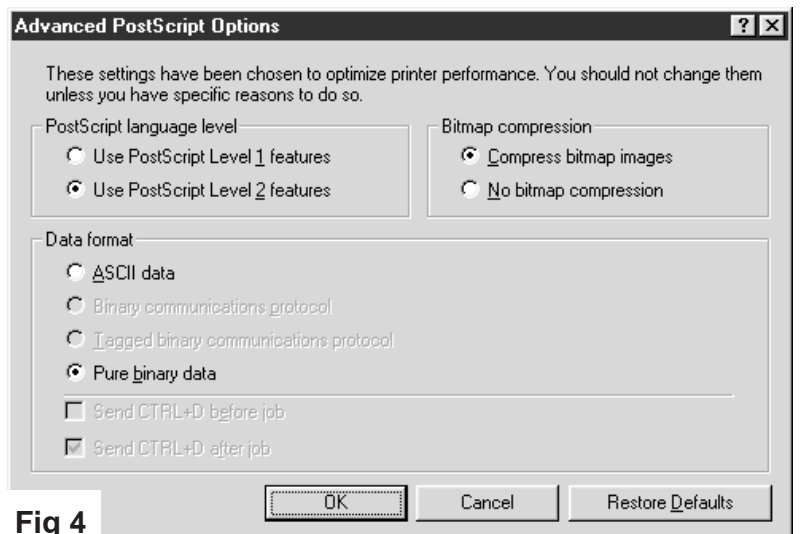


Fig 4