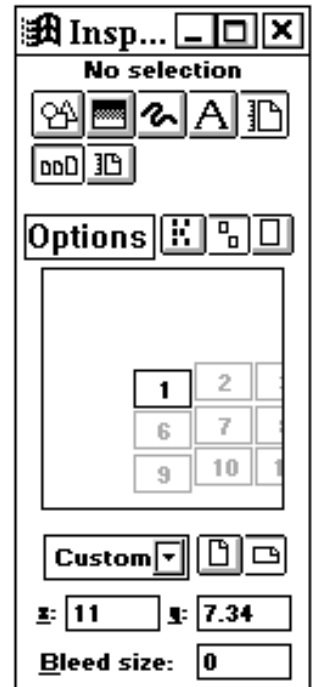


Before setting up your file please follow the Windows 98 Printer Setup tip sheet (next page) to properly configure your Windows 98 environment.

### Document Setup

1. In the Inspector, set measurement units to inches and **assign a page size of 11"x7.34"** as shown. All pages should be contained in a single document, but **be consistent with slide setup within the document**; do not mix orientations (landscape vs. portrait) or page sizes in one file. If you prefer to create single page documents, extra time and output charges of \$5 per file will be assessed. (You can send as PostScript files to avoid this.)
2. **To create a background you must draw a filled rectangle** covering the **entire 11"x7.34"** page on each slide or create a template which will be applied to all the slides. Draw a rectangle filled with white for a white background. **Note:** We do not recommend using a white background because it will cause all color to be washed out.
3. Construct your artwork on top of this background. **Allow a minimum margin of 1/4" on all sides when placing text and graphics to ensure nothing is clipped by the slide mount.** If your files are set up incorrectly output cannot be guaranteed.
4. **Pattern fills will not image to film.** Fill objects with solid or gradient colors only.
5. **Under Printer Setup in the File menu, select the Imagers Film Recorder** as the printer driver (set up as shown in the Windows 95 Printer Setup tip sheet included.)
6. **A complete list of all fonts used in your file must be supplied to ensure proper output. Unsupported fonts must be supplied.** (Please refer to our tip sheet regarding available fonts.) For TrueType, send .ttf files; for Adobe, send .pfm and .pfb files.



### Color Suggestions

**When defining color for slides, utilize the RGB color model for all elements.** This will allow a higher degree of fidelity between screen and output.

**The color mode for color lasers should be CMYK.** RGB is not a dependable color mode choice for color laser output because it is not the color mode the printers are designed to output. While our technicians will attempt to ensure the most acceptable color possible, RGB output is **not** consistent.

### Additional Charges

**Additional charges will be assessed for jobs totalling over 20 megs** (output file, supports, and fonts) at a rate of \$2.50 per meg.

**Jobs sent on multiple disks will incur charges of \$5.00 per disk.** Removables (CD, Zip, Jaz) are suggested for large files. *Do not compress files sent on removables.*

For 35mm slide output, Imagers Film Recorder should be chosen as your output device. Printer files for the recorder and our other output devices are available for download from our web site at [www.imagers.com](http://www.imagers.com) in the Downloads area.

The QMS Colorscript 100 Model 10 (available on Win 95 CD) may be chosen as an alternative, but we recommend using the driver specifically designed for the the chosen output device to ensure proper output.

Install the printer as you would any Win 98 printer by clicking "Add a Printer" in the Printers dialog and following the steps. (When prompted to choose a printer click have disk and choose the directory containing the Imagers printer files.) Once the printer is installed, follow these setup guidelines:

1. Select Settings and Printers from Start menu. Right-click Imagers Film Recorder, and get Properties.
2. Select the Paper tab and set to Letter. (Fig 1)
3. Click Unprintable Area and set to zero left and right and .58 top and bottom. (Fig 2)
4. Select the PostScript tab and ensure Print PostScript error information is not checked. (Fig 3)
5. Click Advanced and select PostScript Level 2, Compress Bitmaps and Pure Binary Data. (Fig 4)

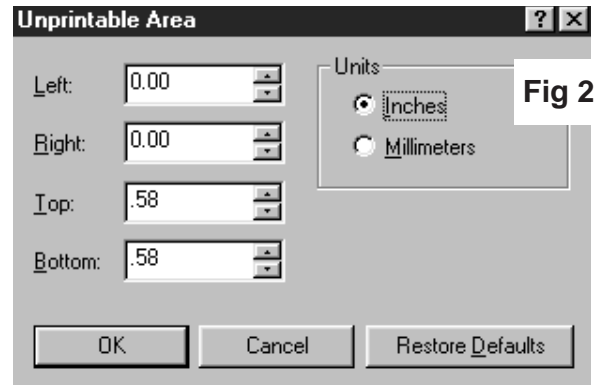


Fig 2

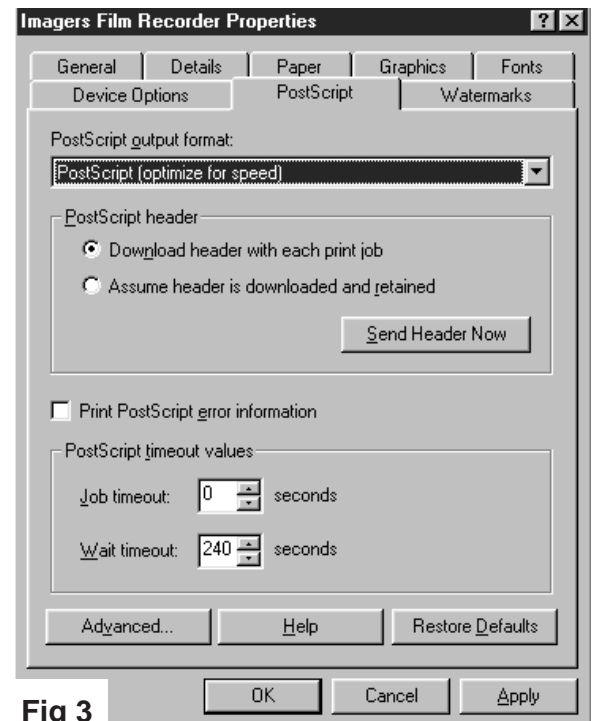


Fig 3

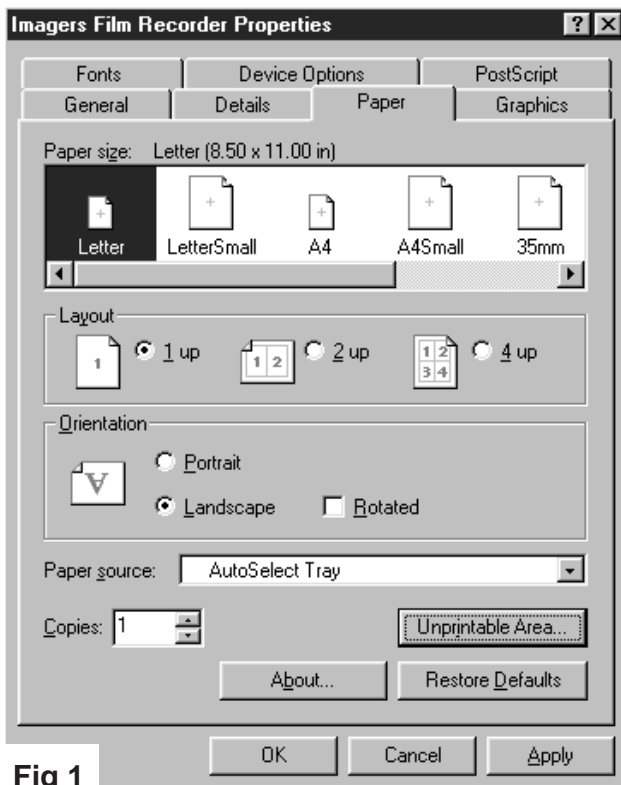


Fig 1

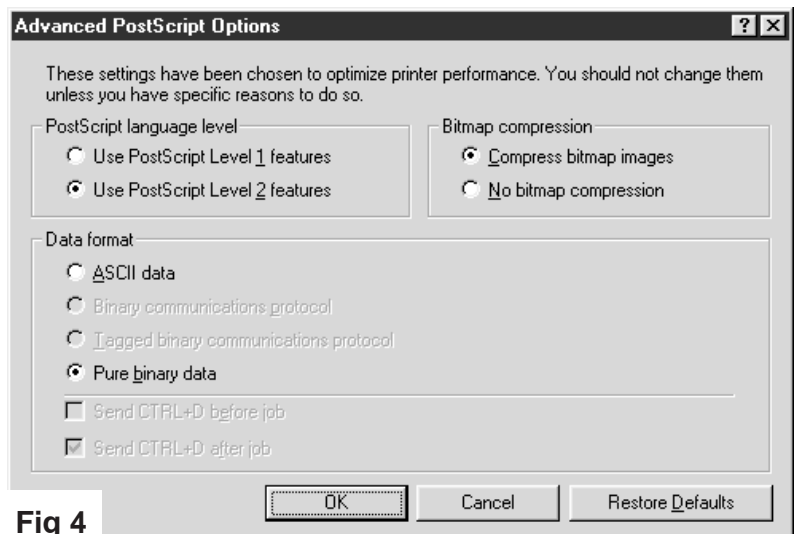


Fig 4